

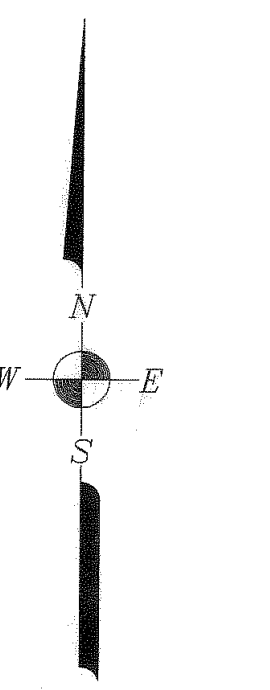
JACOB THOMAS SURVEY, A - 74

LINE TABLE

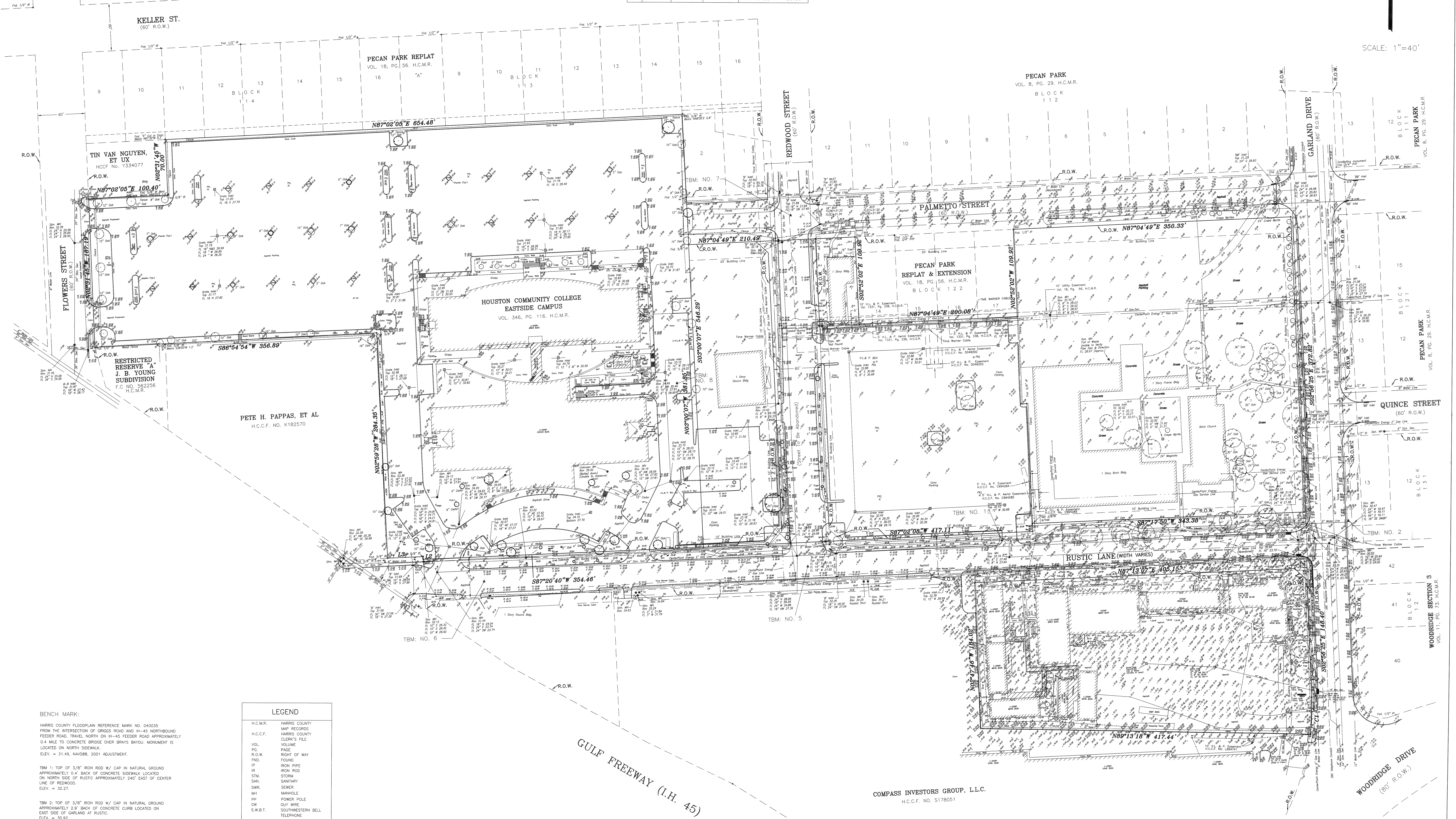
L1	S02°56'35"E 10.00'
L2	N02°51'17"W 3.50'
L3	S87°08'43"E 10.00'
L4	S47°09'27"E 20.99'

CURVE DATA

NO.	RADIUS	LENGTH	DELTA	CHORD
CI	304.30'	46.72'	08°42'47"	S01°35'13"W 46.67'



SCALE: 1"=40'



BENCH MARK:
 HARRIS COUNTY FLOODPLAIN REFERENCE MARK NO. 040035 FROM THE INTERSECTION OF GROGS ROAD AND IH-45 NORTHBOUND FEEDER ROAD, TRAVEL NORTH ON IH-45 FEEDER ROAD APPROXIMATELY 0.4 MILE TO CONCRETE BRIDGE OVER BRAYS BAYOU. MONUMENT IS LOCATED ON NORTH SIDEWALK.
 ELEV. = 31.49, NAVD83, 2001 ADJUSTMENT.

TBM 1: TOP OF 3/8" IRON ROD W/ CAP IN NATURAL GROUND APPROXIMATELY 0.4' BACK OF CONCRETE SIDEWALK LOCATED ON NORTH SIDE OF RUSTIC APPROXIMATELY 260' EAST OF CENTER LINE OF REDWOOD.
 ELEV. = 32.27.

TBM 2: TOP OF 3/8" IRON ROD W/ CAP IN NATURAL GROUND APPROXIMATELY 2.3' BACK OF CONCRETE CURB LOCATED ON EAST SIDE OF GARLAND AT RUSTIC.
 ELEV. = 30.92.

TBM 5: TOP OF CONC. NAIL WITH SHINER IN ASPHALT LOCATED AT THE INTERSECTION OF REDWOOD AND RUSTIC.
 ELEV. = 32.82.

TBM 6: TOP OF CONC. NAIL WITH SHINER IN ASPHALT LOCATED ON RUSTIC APPROXIMATELY 416' WEST OF CENTER LINE OF REDWOOD.
 ELEV. = 32.49.

TBM 7: TOP OF CONC. NAIL WITH SHINER IN ASPHALT LOCATED AT THE INTERSECTION OF PALMETTO AND REDWOOD.
 ELEV. = 32.54.

TBM 8: TOP OF "X" IN CONCRETE LOCATED IN THE HOUSTON COMMUNITY COLLEGE PARKING LOT ON WEST SIDE OF REDWOOD.
 ELEV. = 33.29.

LEGEND	
H.C.M.R.	HARRIS COUNTY MAP RECORDS
H.C.C.F.	HARRIS COUNTY CLERK'S FILE
VOL.	VOLUME
P.G.	PAGE
R.O.W.	RIGHT OF WAY
FND.	FOUND
IP	IRON PIPE
IR	IRON ROD
STM.	STORM
SAN.	SANITARY
SWR.	SEWER
MH	MANHOLE
PP	POWER POLE
OW	GWY WIRE
S.W.B.T.	SOUTHWESTERN BELL TELEPHONE
PEDEST.	PEDESTAL
WV	WATER VALVE
WM	WATER METER
CO	CLEAN OUT
TS	TRAFFIC SIGN
SV	SPRINKLER VALVE
GM	GAS METER
PKL	PARKING LIGHT
FL	FLOW LINE
TC	TOP OF CURB
G	GUTTER
PH	FIRE HYDRANT
SBC	SOUTHWESTERN BELL COMPANY
H.L.&P.	HOUSTON LIGHTING & POWER
ELEV.	ELEVATION
33.25	EXISTING ELEVATION

TOPOGRAPHIC SURVEY OF THE HOUSTON COMMUNITY COLLEGE SOUTHEAST CAMPUS HARRIS COUNTY, TEXAS.

LANDTECH CONSULTANTS, INC.
 CIVIL ENGINEERING * LAND SURVEYING
 2627 NORTH LOOP WEST
 SUITE 224
 HOUSTON, TEXAS 77008

DATE: DECEMBER 20, 2006
 SCALE: 1" = 40'
 DRAWING NO.: 1702-E-283
 JOB NO.: 050185.00
 FIELD BOOK NO.: M06-015

